

RS85 Prestige

Advanced Diagnostics for Veterinary Ultrasound



RS85 Prestige is Samsung's premium ultrasound system in the radiology marketplace. Designed for ultimate scanning performance. RS85 Prestige effortlessly delivers superb image clarity, impressive depth of penetration and sensitive perfusion of blood flow - all without excessive manipulation of console controls using Samsung's new innovative "Crystal Architecture™".

Imaging Technology Powered by CrystalArchitecture™

CrystalArchitecture™ is the core of our exceptional image clarity and penetration and is built upon a combination of innovative beamforming (Crystal Beam™), sophisticated image processing (Crystal Pure™) and advanced S-Vue Transducers™ to produce clear, uniform and high resolution images.

Designed for your Convenience

- 23.8" Wide Screen Monitor
- 14" Tilting Touch Screen
- 6 Way Control Panel - reduces repetitive motion stress
- Touch Customization - fully customizable
- EZ Prep™ - auto detects the transducer based on the worklist inputted into the system and sets the Preset of the selected transducer

Scan for
More Info!



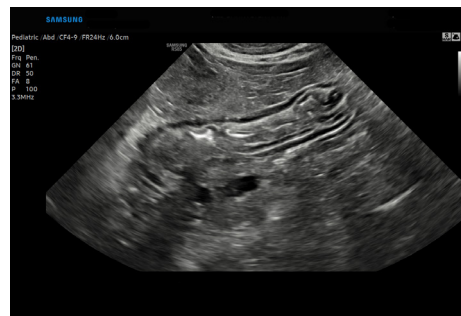
RS85 Prestige

Sophisticated Imaging Technology

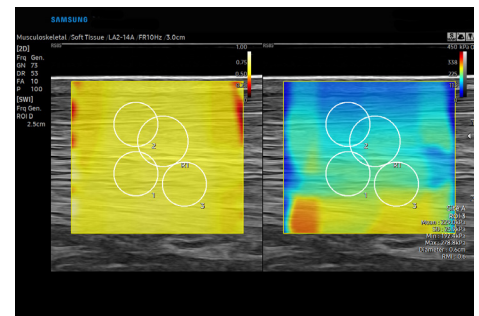
- **ShadowHDR™** - is designed to suppress shadows and enhance the clarity of displayed grayscale images.
- **S-Shearwave Imaging™** - allows for the non-invasive assessment of the stiffness for tissue/lesions in various applications such as breast, liver, MSK and prostate.
- **MV-Flow™** - is an advanced Doppler technology providing detailed documentation of microvascular perfusion into tissues and organs.
- **LumiFlow™** - displays a three-dimensional "like" appearance to 2D color Doppler enhancing spatial comprehension of blood vessels.
- **S-Flow™** - is a highly sensitive directional power Doppler for the assessment of slow blood flow.
- **HQ-Vision™** - compensates for the natural signal distortion as sound propagates through tissue to display maximum pixel sharpness.



Kidney using MV-Flow™



Liver



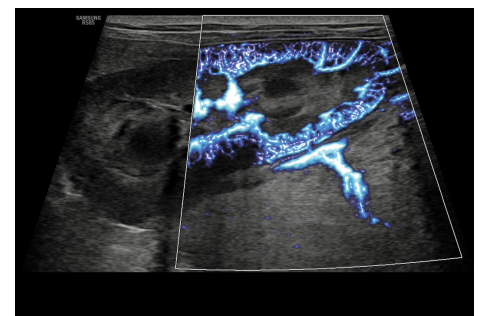
Kidney using S-Shearwave Imaging™



Small Intestine



Spleen



Kidney using MV-Flow™ + LumiFlow™



CA3-10A

Abdomen, Gynecology,
Musculoskeletal, Obstetrics, Vascular



CA4-10M

Vascular



LA2-14A

Abdomen, Musculoskeletal,
Small Parts, Vascular



LA4-18A

Abdomen, Musculoskeletal,
Small Parts, Vascular