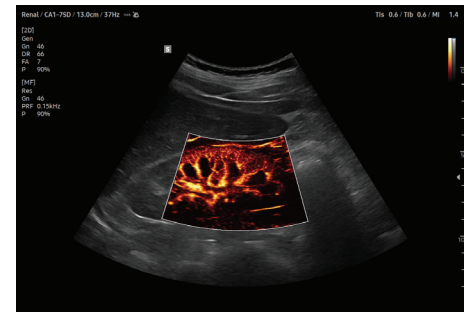




V5

From Basics to Brilliance

- Striking Images for Extra Confidence
- Elevate Diagnostic Precision
- Enhances Daily Efficiency



Advanced Crystal Architecture™
delivers exceptional clarity and spatial
resolution, enabling precise needle
guidance and increased confidence in
interventional radiology.



Click or Scan
to Learn More

The **V5** ultrasound system offers advanced imaging capabilities and AI-driven diagnostic tools ideal for interventional radiology. Its compact, user-friendly design enables streamlined workflows and helps clinicians make confident decisions for everyday IR procedures. With its mid-range, reliable performance at an affordable price, the V5 strikes the right balance for daily use.

Advanced Imaging Technologies

ShadowHDR™ is designed to suppress shadows and enhance the clarity of displayed grayscale images.

HQ-Vision™ compensates for the natural signal distortion as sound propagates through tissue to display maximum pixel sharpness.

ClearVision™ an advanced image processing technology designed to enhance contrast resolution and sharpen tissue interfaces for more confident image assessment

S-Flow™ is a highly sensitive directional power Doppler ideal for documentation of slow moving blood flow.

MV-Flow™ is an advanced Doppler technology providing detailed documentation of microvascular perfusion into tissues and organs.

LumiFlow™ displays a three-dimensional "like" appearance to 2D color Doppler enhancing spatial comprehension of blood vessels.

Smart Tools for IR Efficiency

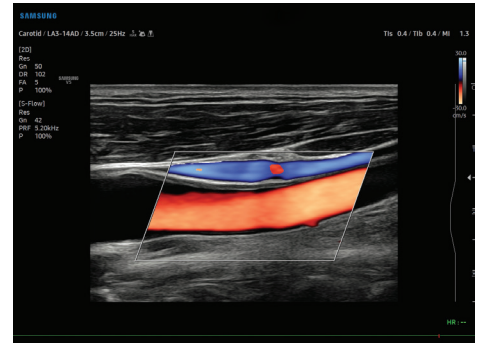
NerveTrack™ provides nerve area location information during real-time ultrasound scanning.

EzExam+™ transforms the ultrasound examination into a well-organized streamlined process. EzExam+ enables the user to create an efficient diagnostic environment storing optimized and preferred protocols within the EzExam+ function control.

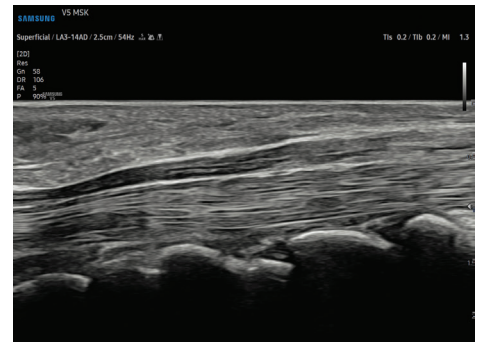
NeedleMate+™ dramatically enhances needle visualization when performing commonly used intervention procedures.

Panoramic+™ imaging displays as an extended field-of-view & also supports angular scanning from linear transducer data acquisition.

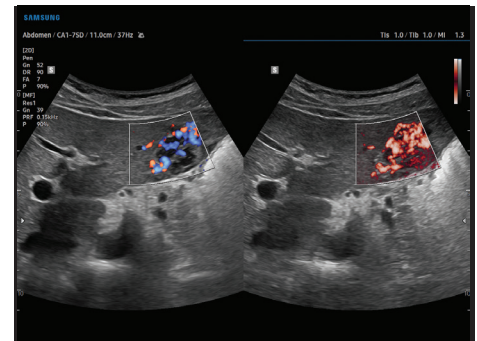
BatteryAssist™ enables scanning in procedure rooms or at the bedside without AC power—ideal for mobile IR suites.



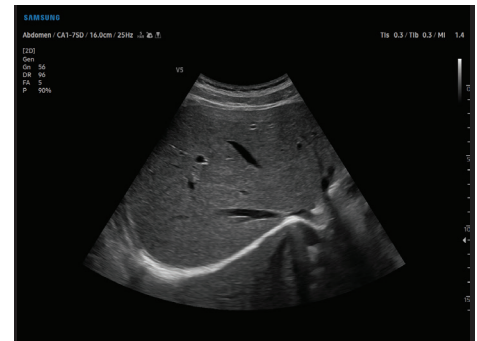
Vascular Carotid



Median Nerve



Abdomen Dual S-Flow and MV-Flow



Liver Subcostal View