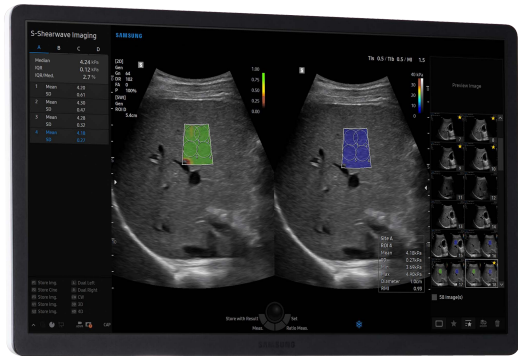


SAMSUNG



V7

Performance
Versatility

Combining Performance & Versatility

The V7 provides reliable performance while offering comprehensive tools with the latest sonographic innovations. Rich in technologies, the V7 provides a full suite of options to meet your imaging needs.



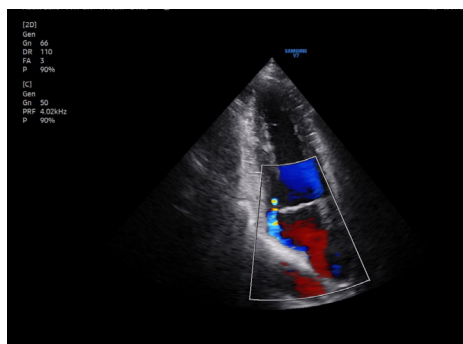
Relentless Innovation
for your diagnostic confidence

Exquisite Image Quality

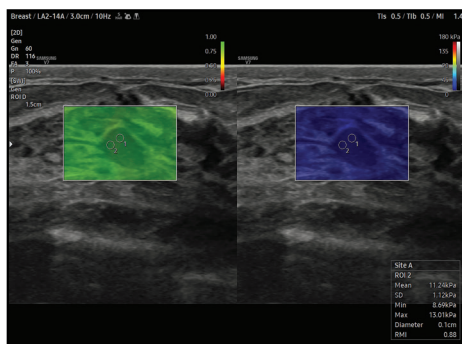
- **ShadowHDR™** - is designed to suppress shadows and enhance the clarity of displayed grayscale images.
- **HQ-Vision™** - compensates for the natural signal distortion as sound propagates through tissue to display maximum pixel sharpness.
- **ClearVision™** - advanced image processing technology designed to enhance contrast resolution and sharpen tissue interfaces for more confident image assessment.
- **S-Flow™** - is a highly sensitive directional power Doppler ideal for documentation of slow moving blood flow.
- **MV-Flow™** - is an advanced Doppler technology providing detailed documentation of microvascular perfusion into tissues and organs.
- **LumiFlow™** - displays a three-dimensional "like" appearance to 2D color Doppler enhancing spatial comprehension of blood vessels.

Smart Tools for General Imaging

- **S-Shearwave Imaging™** - allows for the non-invasive assessment of the stiffness for tissue/ lesions in various applications such as breast, liver, MSK and prostate. Color-coded elastogram, quantitative measurements, dual or single display option, and user-selectable ROI functions are especially useful for more confident assessment of breast and liver diseases.
- **NeedleMate+™** - dramatically enhances needle visualization when performing commonly used intervention procedures.
- **HeartAssist™ Adult-** is a semi-automatic measurement feature designed to recognize and quantify cardiac anatomy facilitating consistency of measurements and efficient workflow.
- **Strain+™** - is a quantitative tool for global and segmental wall motion of the left ventricle (LV). In Strain+, three standard LV views and a Bull's Eye are displayed in a quad screen for easy and quick assessment of the LV-function.



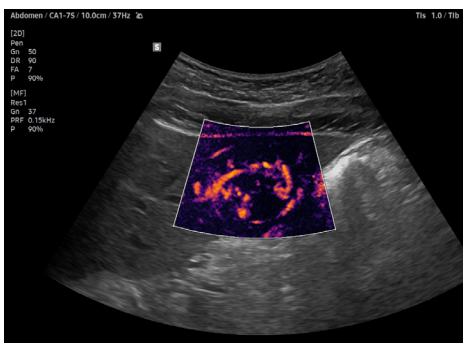
2 Chamber Heart



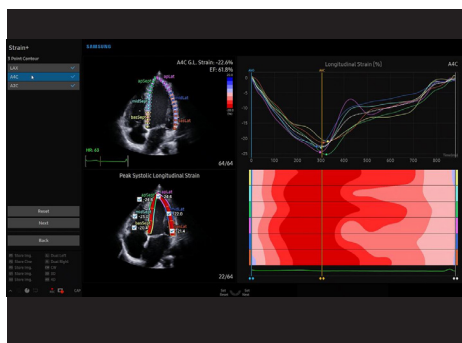
Breast using S-Shearwave Imaging



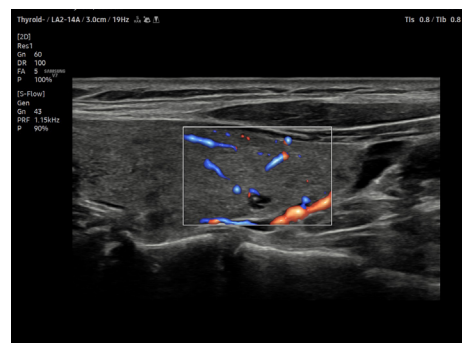
Liver using ClearVision



Abdomen using MV-Flow



Heart using Strain+



Thyroid using LumiFlow