

SAMSUNG

V8

Performance Versatility Intelligence

Redefined Imaging Technologies

The V8 ultrasound system combines exquisite image quality powered by Samsung's Crystal Architecture™ with an efficient, streamlined exam enabled by Intelligent Assist tools. The reengineered workflow fulfills the needs of today's busy clinical environment. Samsung is continuously seeking new ways to help professionals obtain reliable answers with greater image clarity, enhanced accuracy, and improved work efficiency.



Re-engineered
workflow for easy and
productive process



Intelligent Assist
tools for efficient
examination



Exquisite image quality
for reliability
and confidence

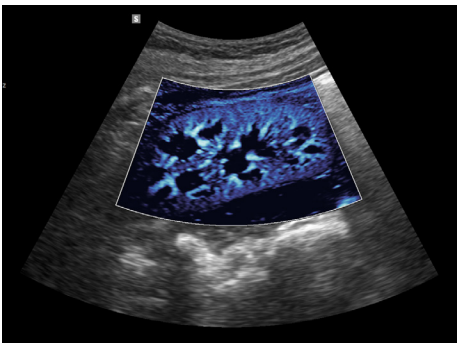
Relentless Innovation
for your diagnostic confidence

Exquisite Image Quality

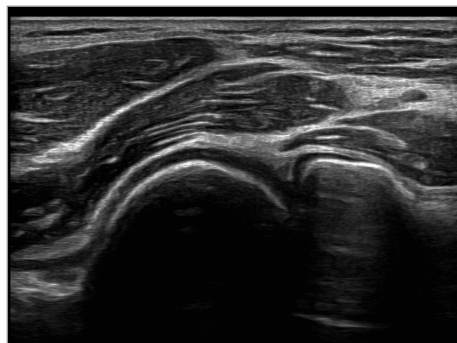
- **ShadowHDR™** - is designed to suppress shadows and enhance the clarity of displayed grayscale images.
- **ClearVision™** - advanced image processing technology designed to enhance contrast resolution and sharpen tissue interfaces for more confident image assessment.
- **HQ-Vision™** - compensates for the natural signal distortion as sound propagates through tissue to display maximum pixel sharpness.

Intelligent Assist Tools

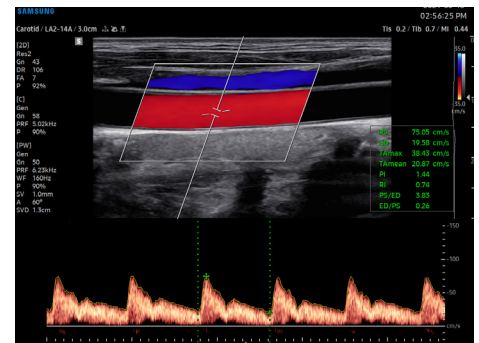
- **S-Shearwave Imaging™** - allows for the non-invasive assessment of the stiffness for tissue/lesions in various applications such as breast, liver, MSK and prostate. Color-coded elastogram, quantitative measurements, dual or single display option, and user-selectable ROI functions are especially useful for more confident assessment of breast and liver diseases.
- **NerveTrack™** - is a function that detects and provides information of the location of nerve area in real-time during ultrasound scanning.
- **S-Flow™** - highly sensitive directional power Doppler excellent for the assessment of slow blood flow.
- **MV-Flow™** - is an advanced Doppler technology providing detailed documentation of microvascular perfusion into tissues and organs.
- **LumiFlow™** - displays a three-dimensional "like" appearance to 2D color Doppler enhancing spatial comprehension of blood vessels.
- **NeedleMate+™** - dramatically enhances needle visualization when performing commonly used intervention procedures.
- **QuickSave™** - is a quantitative tool for global and segmental wall motion of the left ventricle (LV). In Strain+, three standard LV views and a Bull's Eye are displayed in a quad screen for easy and quick assessment of the LV-function.



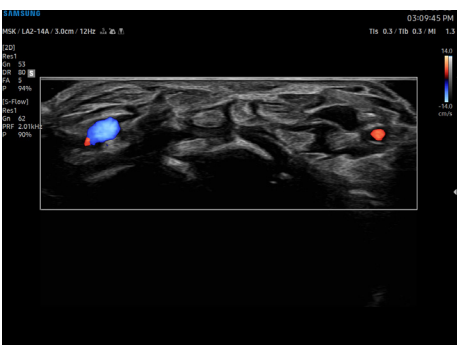
Kidney with MV-Flow™



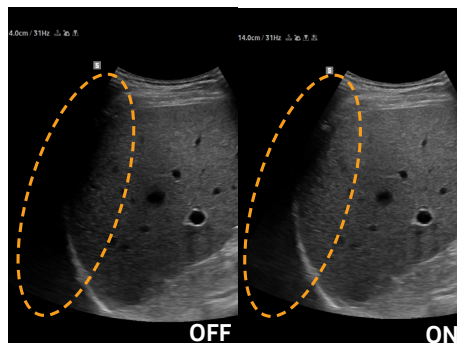
Elbow with HQ-Vision™



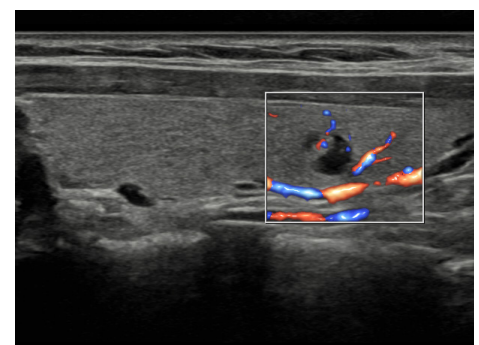
Common carotid artery Doppler



Finger Flexor tendons with S-Flow™



Intercostal view with ShadowHDR™



Thyroid nodule with S-Flow™ and LumiFlow™