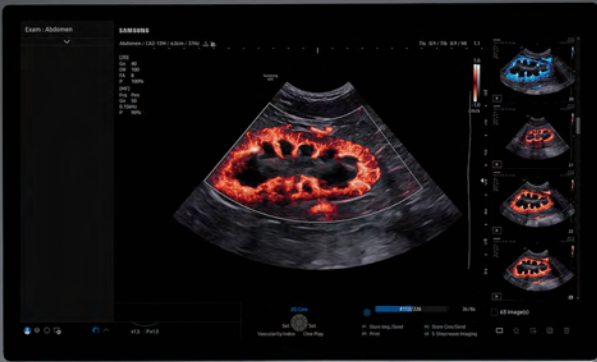


SAMSUNG



R20

Innovation
That Elevates



V E T E R I N A R Y



★ R20

Precision Imaging, Elevated by Innovation.

The Samsung R20 ultra-premium ultrasound system delivers diagnostic accuracy with advanced imaging, AI innovation, and ergonomic design that empowers clinicians to confidently care for patients – both today and in the future.

Powered by a new imaging engine that advances every layer of image formation to maximize diagnostic accuracy across users, even in the most challenging patients.

Samsung imaging architecture

This new imaging architecture is built on three pillars of innovation:



Digital beamforming improves resolution and frame rates, and eliminates unwanted artifacts.



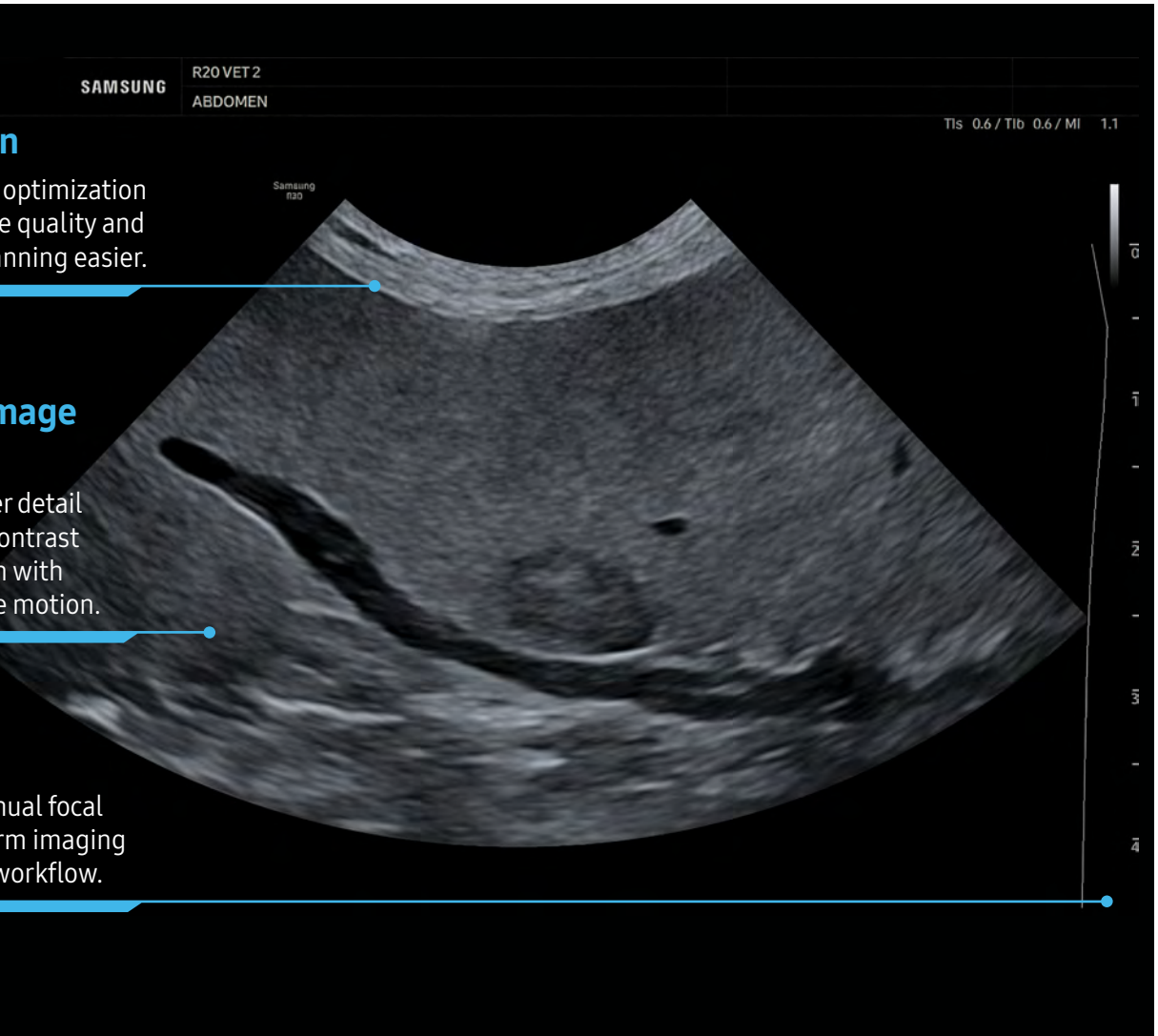
Third Harmonics improves visualization of subtle details with superior contrast and axial resolution.



Adaptive Image Processing optimizes parameters in real-time for effortless scanning.

Every Image Elevated

Dynamic optimization ensures consistent, high-quality images across users and patients, while advanced color imaging reveals microvascular flow in exceptional detail – bringing Samsung's Art of Ultrasound to life.



SAMSUNG R20 VET 2
ABDOMEN

TIs 0.6 / Tlb 0.6 / MI 1.1

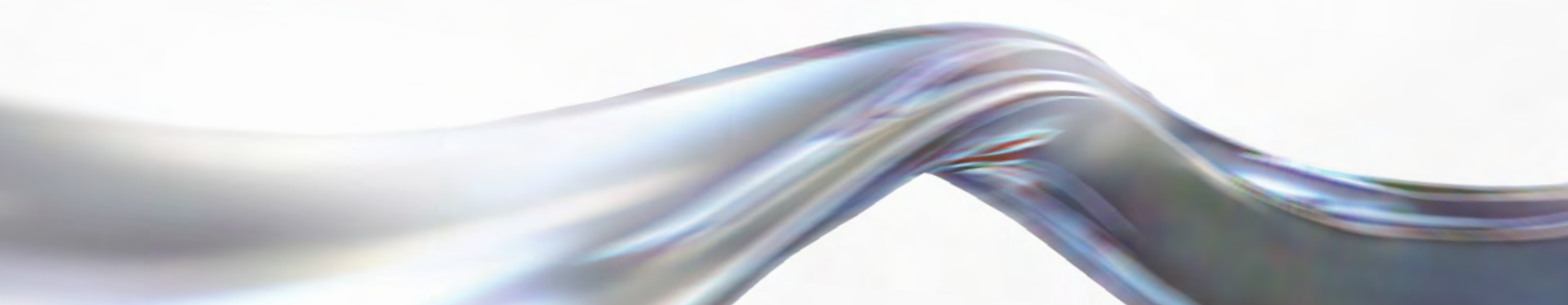
Samsung
R20

0.1
1
2
3
4

Live Q-Scan
Real-time gain optimization improves image quality and helps make scanning easier.

Adaptive Image Processing
Delivers sharper detail and improves contrast resolution, even with patient or probe motion.

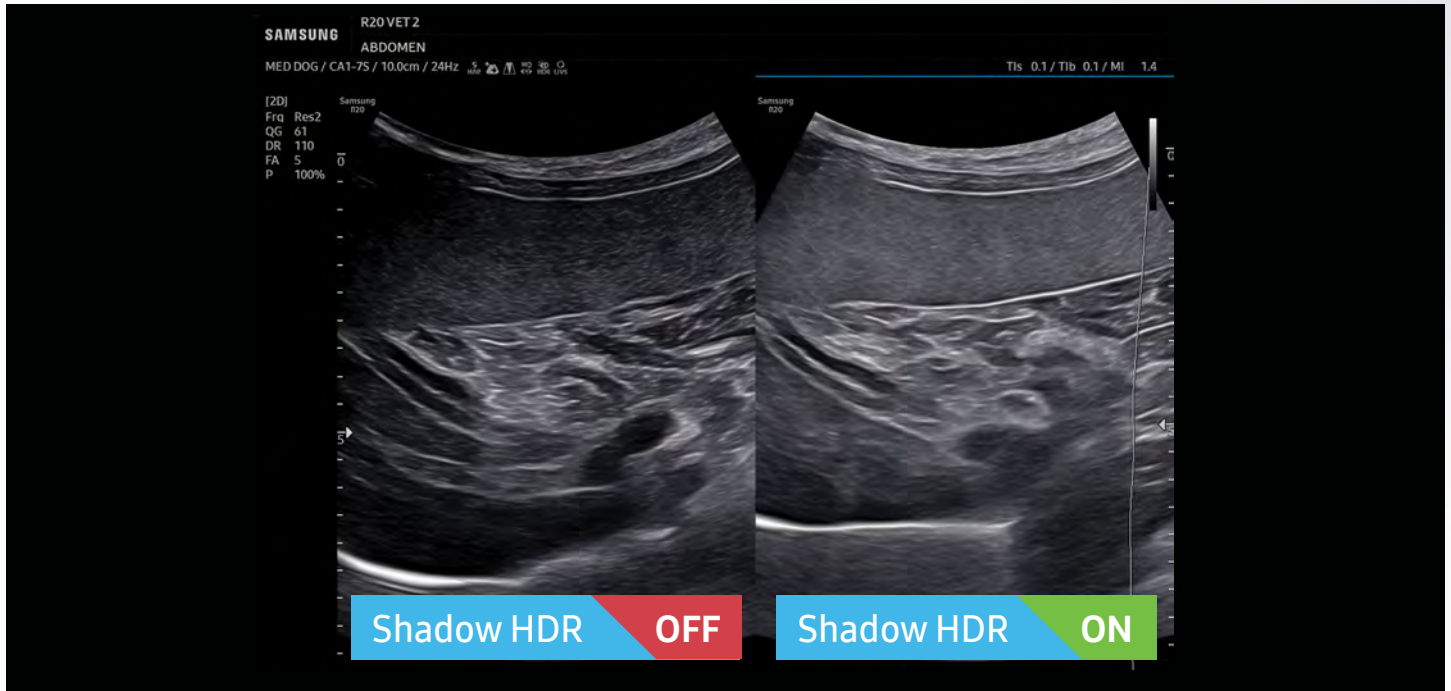
A Focus™
Eliminates manual focal zones for uniform imaging and improved workflow.





Shadow HDR™

Minimizes shadowing while preserving detail, improving visualization of obscured tissues and enhancing diagnostic confidence across clinical exams.



MV-Flow™

Delivers detailed microvascular flow with high sensitivity and artifact suppression, enhancing diagnostic confidence by providing richer hemodynamic insights in a single view.

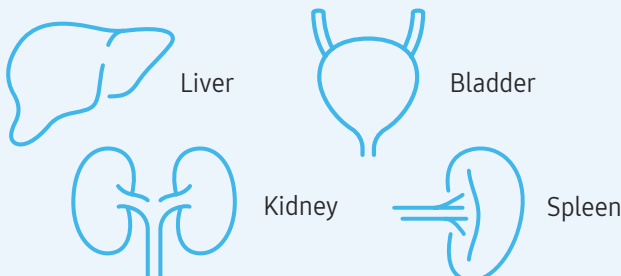


Innovations With Purpose

Features over a dozen AI-powered tools and advanced technologies that reduce exam time, keystrokes, and variability, while helping enhance efficiency and clinical possibilities across use cases.²

Advanced Features

Up to **83%** reduction in keystrokes³ Up to **77%** reduction in exam time³



The diagram shows four line-art icons of organs: a Liver, a Bladder, a pair of Kidneys, and a Spleen. Each organ is labeled with its name to the right.

AI-Assist

AI-based automation performs real-time measurements of key organs – instantly, accurately, and reproducibly.



3rd Harmonic

Three (3) times the transmitted frequency resulting in better Axial resolution and line-continuity structure.

Effortless Workflow



EzStructure™ & EzFlow™

One-button solution for optimal 2D image settings and optimization of Color and PW Doppler.



Third Generation Probe

CA2-13 single crystal micro-convex probe provides better contrast resolution and uniformity margin expression.

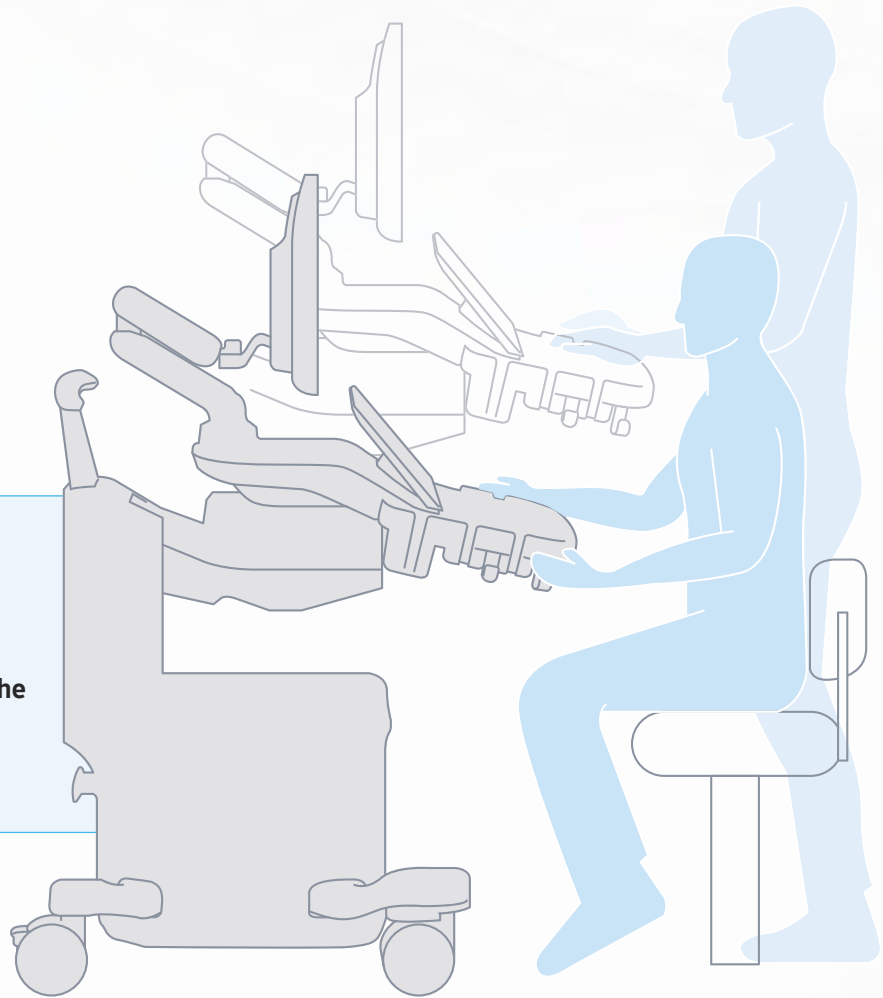
Introduces user-centric innovations and personalized options that enhance comfort and usability for every sonographer.

Ergonomic innovations

Designed with sonographers in mind, these innovative features enhance comfort during scanning, **helping to reduce strain** and protect sonographer well-being.

Meets or exceeds
100%
of ergonomic standards³

Accommodates users from the
5th to 95th
percentile³



MyTune™

Allows users to personalize layouts, imaging presets, and settings, as well as backlighting color, to reduce setup time and make every exam comfortable.



Voice Assist

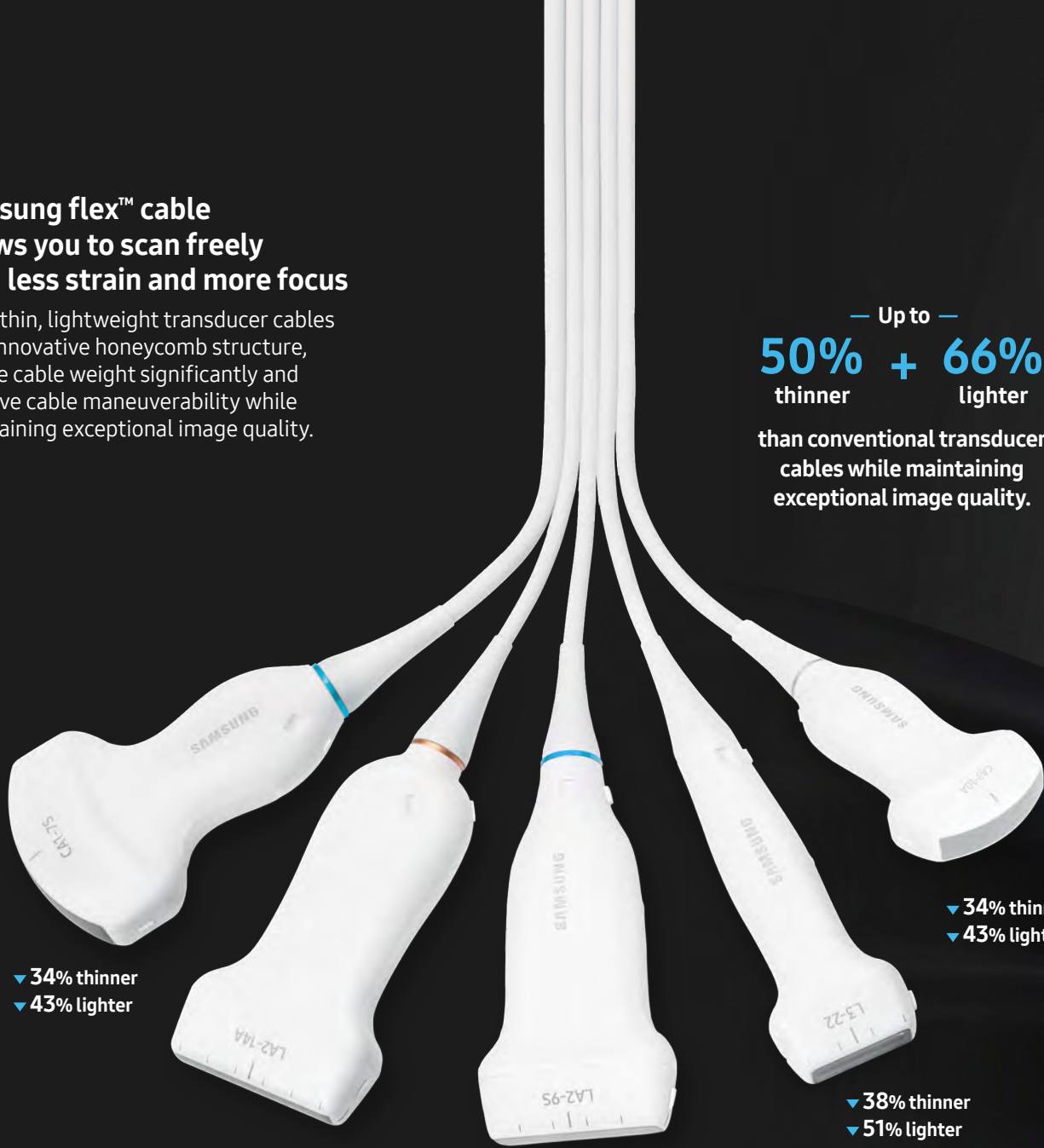
Enables up to over 40 customizable commands in vascular and procedural exams, reducing keystrokes, improving ergonomics, and supports multitasking in demanding environments.

Samsung flex™ cable allows you to scan freely with less strain and more focus

Ultra-thin, lightweight transducer cables with innovative honeycomb structure, reduce cable weight significantly and improve cable maneuverability while maintaining exceptional image quality.

— Up to —
50% + 66%
 thinner + lighter

than conventional transducer cables while maintaining exceptional image quality.



▼ **34% thinner**
 ▼ **43% lighter**

▼ **34% thinner**
 ▼ **43% lighter**

▼ **50% thinner**
 ▼ **66% lighter**

▼ **50% thinner**
 ▼ **66% lighter**

▼ **38% thinner**
 ▼ **51% lighter**



➤ **LEARN MORE ABOUT SAMSUNG R20 INNOVATION**

1 Feature count reflects the evaluated software build and licensed options. Availability may vary by package, transducer, configuration, region, and regulatory clearance. Refer to current documentation for the exact feature list. Data on file.

2 Results are from internal workflow studies on sample cases. Actual performance may vary by user, patient and clinical setting. Not a measure of diagnostic performance. Data on file.

3 Source: White paper, Sound Ergonomics, Samsung R20 Ergonomic Evaluation, 2025.

